

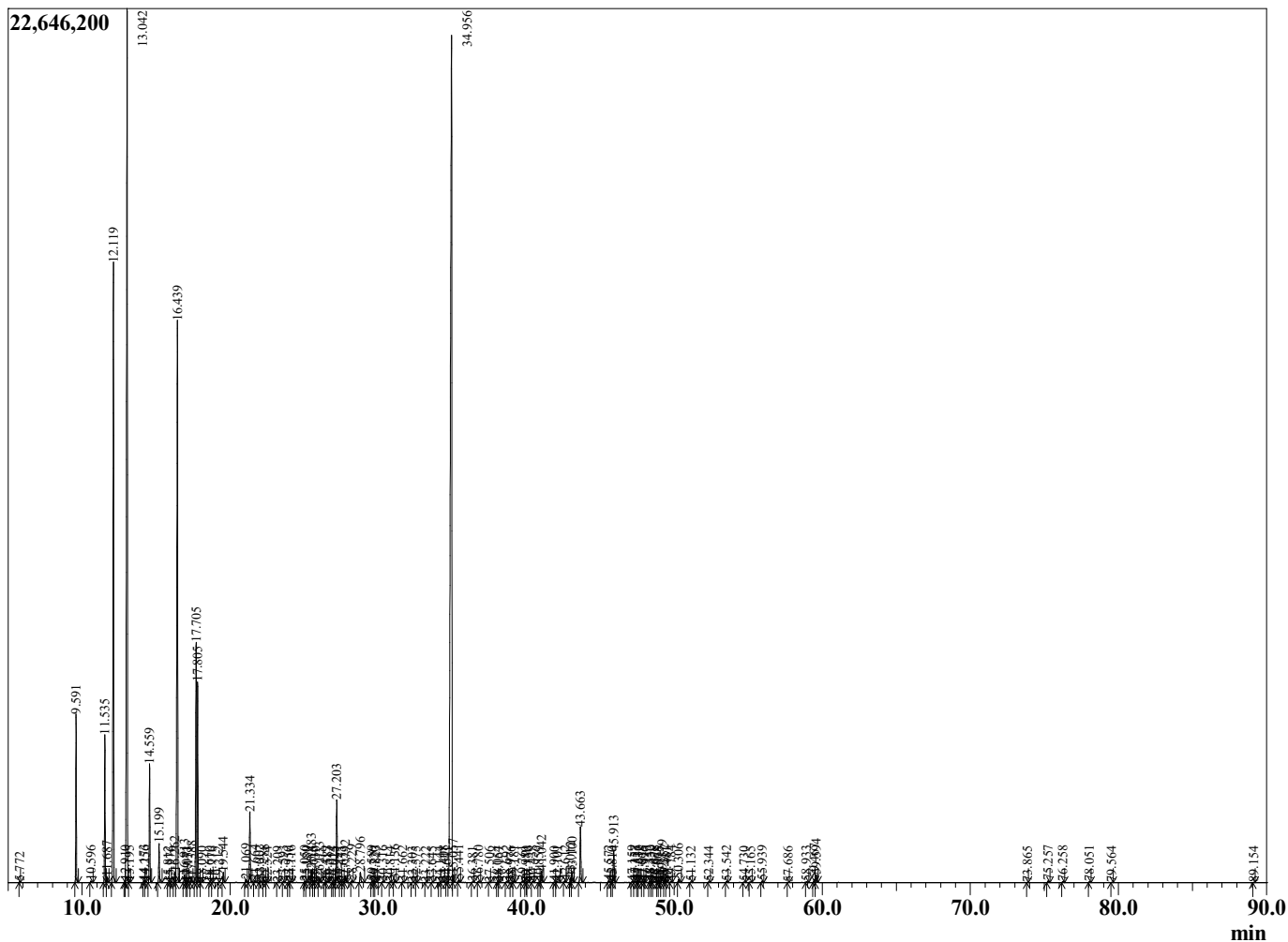
Sample Information

Sample Type : Essential Oil
 Sample Name : Abies sibirica
 Injection Volume : 0.10

Fir Needle Siberian
 Lot# BUK14-KE
 Country: Bulgaria



Chromatogram Abies sibirica



R.Time	Name	Peak Report TIC	Area%
5.772	Toluene		0.01
9.591	Santene		2.48
10.596	Unidentified		0.03
11.535	Tricyclene		2.43
11.687	alpha-Thujene		0.09
12.119	alpha-Pinene		11.49
12.910	alpha-Fenchene		0.02
13.042	Camphene		19.50
13.195	Thuja-2,4(10)-diene		0.01
14.173	Unidentified		0.04
14.256	Sabinene		0.02
14.559	beta-Pinene		2.08
15.199	Myrcene		0.69
15.812	delta-2-Carene		0.01
15.976	Unidentified		0.00
16.262	alpha-Phellandrene		0.22
16.439	delta-3-Carene		12.12
16.913	alpha-Terpinene		0.14
17.071	meta-Cymene		0.01
17.153	Unidentified		0.01
17.388	para-Cymene		0.11
17.705	Limonene		5.25
17.805	beta-Phellandrene		3.57
18.090	Unidentified		0.01
18.610	Unidentified		0.00
18.776	(E)-beta-Ocimene		0.00
19.212	Unidentified		0.00
19.544	gamma-Terpinene		0.19
21.069	Isoterpinolene		0.06
21.334	Terpinolene		1.40
21.664	para-Cymenene		0.05
22.002	Nona-3,5-dien-2-ol+Unidentified		0.05
22.288	Unidentified		0.06
22.524	Unidentified		0.01
23.209	Unidentified		0.01
23.593	alpha-Fenchol		0.02
23.950	cis-para-Menth-2-en-1-ol		0.02
24.116	alpha-Campholenal		0.02
25.050	trans-Pinocarveol		0.02
25.180	trans-para-Menth-2-en-1-ol		0.02
25.483	Camphor		0.27
25.615	Unidentified		0.02
25.730	alpha-Phellandrene-8-ol		0.00
26.033	Camphene hydrate		0.10
26.419	trans-Pinocamphone		0.01
26.583	para-Mentha-1,5-dien-8-ol+Isoborneol		0.03
26.914	Unidentified		0.00
27.025	Unidentified		0.01
27.203	Borneol		1.75
27.473	Isopinocamphone		0.02
27.653	Unidentified		0.01
27.792	Terpinen-4-ol		0.14
28.229	para-Cymen-8-ol		0.05
28.796	alpha-Terpineol		0.24
29.589	Decanal		0.04
29.720	Unidentified		0.01

R.Time	Name	Area%
29.823	Unidentified	0.02
30.316	Fenchyl acetate	0.02
30.814	Unidentified	0.01
31.136	Methyl thymol ether	0.05
31.662	Unidentified	0.02
32.303	Unidentified	0.01
32.575	Geraniol	0.01
33.222	Unidentified	0.01
33.645	Unidentified	0.01
34.144	Unidentified	0.01
34.408	Unidentified+Phellandral	0.03
34.641	Unidentified	0.01
34.956	Bornyl acetate	30.47
35.057	Isobornyl acetate	0.13
35.441	2-Undecanone	0.05
36.381	Unidentified	0.01
36.780	Unidentified	0.03
37.506	Unidentified	0.01
38.054	Unidentified	0.01
38.167	Unidentified	0.01
38.692	Unidentified	0.03
38.976	alpha-Terpinyl acetate	0.01
39.181	alpha-Longipinene	0.03
39.761	Neryl acetate	0.05
39.980	Unidentified	0.01
40.136	2-Dodecanone	0.01
40.438	Cyclosativene	0.03
40.859	Unidentified	0.01
41.042	Geranyl acetate	0.26
41.900	Sativene	0.01
42.101	Unidentified	0.03
42.612	Sibirene	0.04
43.012	Longifolene	0.10
43.100	Dodecanal	0.23
43.663	trans-beta-Caryophyllene	1.31
45.572	alpha-Himachalene	0.05
45.810	(E)-beta-Farnesene	0.01
45.913	alpha-Humulene	0.77
47.159	Dodecanol	0.03
47.357	Unidentified	0.04
47.536	Unidentified	0.03
47.612	gamma-Himachalene	0.04
47.875	delta-Selinene	0.02
47.996	beta-Selinene	0.01
48.352	beta-Alaskene	0.04
48.430	2-Tridecanone	0.02
48.678	alpha-Muurolene+beta-Himachalene	0.05
48.868	delta-Amorphene	0.01
48.975	(E,E)-beta-Farnesene	0.01
49.179	beta-Bisabolene	0.16
49.352	(Z)-gamma-Bisabolene	0.05
49.481	Unidentified	0.01
49.784	delta-Cadinene	0.02
50.306	(E)-gamma-Bisabolene	0.08
51.132	(E)-alpha-Bisabolene	0.01
52.344	(E)-Nerolidol	0.02
53.542	Caryophyllene oxide	0.03
54.730	Longiborneol	0.02
55.165	Humulene epoxide II	0.02
55.939	Unidentified	0.04
57.686	Himachalol	0.01
58.933	Longiborneol acetate	0.03

R.Time	Name	Area%
59.467	epi-alpha-Bisabolol	0.08
59.594	alpha-Bisabolol	0.19
73.865	Pimaradiene	0.00
75.257	Manool oxide isomer	0.04
76.258	Manoyl oxide isomer	0.03
78.051	Manool	0.02
79.564	Abietadiene	0.01
89.154	Unidentified	0.00
		100.00